

# **DAILY RESEARCH, 6 MEI 2020**

**PT PROFINDO SEKURITAS INDONESIA**

**GD PERMATA KUNINGAN LT 19  
JL KUNINGAN MULIA KAV 9C GUNTUR SETIABUDI JAKARTA SELATAN 12980**

**TELP +62 21 8378 0888**

**EMAIL : CUSTOMERSERVICE@PROFINDO.COM**

**WWW.PROFINDO.COM | PROCLICK.PROFINDO.COM**

# MARKET MOVERS



Bursa Amerika ditutup menguat didorong kenaikan harga minyak mentah dunia dan pelonggaran lockdown disejumlah negara mendorong optimisme investor akan pemulihan ekonomi global. Selain itu saham sektor kesehatan turut mendorong Indeks ke zona positif setelah suksesnya uji coba vaksin covid 19. DOW +0.56%, S&P +0.90%, NASDAQ +1.13%

Bursa saham Eropa ditutup kompak menghijau setelah kenaikan harga minyak mentah dunia dan meredanya ketegangan politik antara US China . Investor juga masih mencermati langkah Bank Central Eropa dalam pemberian stimulus untuk penanggulangan Covid 19. Indeks FTSE +1.66%, DAX +2.40%, CAC +2.11%

Bursa Saham Asia dibuka mayoritas menguat didorong kenaikan harga minyak mentah dunia memberikan angin segar terhadap pemulihan ekonomi global diharapkan mampu meningkatkan permintaan minyak mentah dunia. Indeks Hang Seng +0.43%, Shanghai -0.52%, Nikkei -2.84%, KOSPI +1.02%, STI +0.64%

Harga minyak ditutup menguat didorong sentimen pemulihan ekonomi global dari covid 19 mampu meningkatkan permintaan minyak. WTI +0.24%, Brent Oil -1.74%, Gold 0%.

IHSG pada perdagangan hari ini diperkirakan akan **BULLISH** dengan Range pergerakan **4600-4720** dengan saham-saham yang dapat diperhatikan : **MAPI UNVR BRIS TLKM ADHI CPIN**

# MARET DATA

## AMERIKA

DOW 30	23,883.09	+133.33	+0.56%
S&P 500	2,868.44	+25.70	+0.90%
NASDAQ	8,809.12	+98.41	+1.13%

## EUROPE

DAX	10,729.46	+262.66	+2.51%
FTSE 100	5,849.42	+95.64	+1.66%
CAC 40	4,483.13	+104.90	+2.40%

## ASIA

SHANGHAI	2,845.13	-14.95	-0.52%
HANGSENG	23,970.50	+101.84	+0.43%
SET	1,278.63	-23.03	-1.77%
KOSPI	1,914.64	+19.27	+1.02%
JCI	4,630.13	+24.65	+0.54%
NIKKEI	19,619.35	-574.34	-2.84%
STI	2,588.86	+16.50	+0.64%

## COMMODITIES

GOLD	1,710.65	+0.05	+0.00%
WTI OIL	24.62	+0.06	+0.24%
BRENT OIL	31.07	-0.55	-1.74%
COAL	52.05	+0.60	+1.17%
PALM OIL	2040	+5	+0.25%
TINS	15,197.50	-12.50	-0.08%
NICKEL	12,022.50	-7.50	-0.06%

# EVENT & ECONOMIC CALENDER



## ECONOMIC CALENDER :

### GLOBAL

040520	GERMAN PMI MANUFACTURING (APR)
050520	UK PMI SERVICE (APR)
060520	US CRUDE OIL INVENTORIES US ADP NONFARM EMPLOYMENT CHANGE (APR)
070520	BOE INTEREST RATE DECISION (MAY) BOE INFLATION REPORT US INITIAL JOBLESS CLAIMS
080520	US NONDAEM PAYROLLS (APR)

## CORPORATE ACTION :

### DEVIDEN

BJTM      RP 48.2 (CUM 0505, PAYMENT 2005)

### RUPS

0405      NICK  
0505      TOWR PNSE EPMT ECII  
0605      LUCK BNTT  
0805      DNAR DIGI

### IPO

0405      CASH RP 350

### RIGTH ISSUE

### WARRANT

CASH-W    RATIO 1:1, EXERCISE PRICE RP 500

# JAKARTA COMPOSITE INDEX



## PREVIOUS 5 MEI 2020

CLOSING	4630.133	+0.535%
TRANSACTION	IDR 5.39 TRILLION	
FOREIGN NETT	IDR 430 BIO (SELL)	

## PREDICTION 6 MEI 2020

**BULLISH**  
**RANGE 4600-4720**

**BULLISH HARAMI**  
**STOCHASTIC : UPTREND**  
**MACD : HISTOGRAM POSITIF DAN UPTREND**

# TECHNICAL RECOMENDATION



**MAPI – PT MITRA ADIPERKASA TBK**

**CLOSING 5/5/2020 RP 700 (+12.0%)**

**BUY**

**TARGET PRICE 815**

**STOPLOSS < 680**

**BREAK OUT RISING WEDGE**

**STOCHASTIC : UPTREND**

**MACD : HISTOGRAM POSITIF DAN UPTREND**

# TECHNICAL RECOMENDATION



**UNVR – PT UNILEVER INDONESIA TBK**

**CLOSING 5/5/2020 RP 8300 (+4.7%)**

**SELL ON STRENGTH  
TAKE PROFIT 8450**

**WHITE CANDLE  
STOCHASTIC : UPTREND  
MACD : HISTOGRAM POSITIF DAN UPTREND**

# TECHNICAL RECOMENDATION



**BRIS – PT BRI SYARIAH TBK**

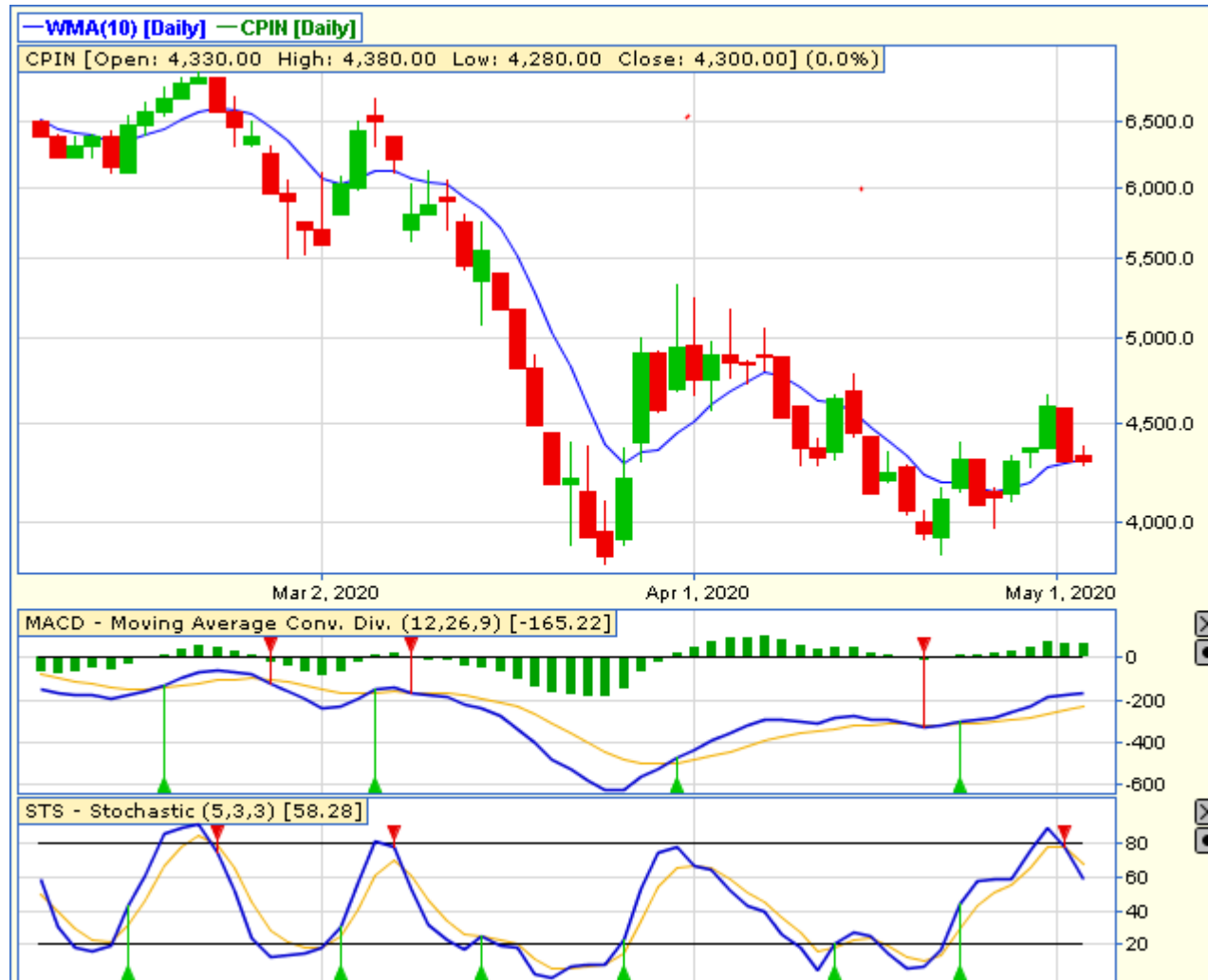
**CLOSING 5/5/2020 RP 252 (+24.8%)**

**SELL ON STRENGTH  
TAKE PROFIT 264**

**BULL FLAG  
STOCHASTIC : UPTREND  
MACD : HISTOGRAM POSITIF DAN UPTREND**



# TECHNICAL RECOMENDATION



**CPIN – PT CHAROEN POKPHAND INDONESIA TBK**

CLOSING 5/5/2020 Rp 4300 (%)

**BUY**

**TARGET PRICE 4660**

**STOPLOSS < 4280**

SPINNING

STOCHASTIC : DOWNTREND

MACD : HISTOGRAM POSITIF DAN UPTREND

# TECHNICAL RECOMENDATION



**ADHI – PT ADHI KARYA (PERSERO) TBK**

**CLOSING 5/5/2020 RP 535 (+1.9%)**

**BUY**

**TARGET PRICE 600**

**STOPLOSS 520**

**WHITE SPINNING**

**STOCHASTIC : UPTREND**

**MACD : HISTOGRAM NEGATIF MENGECIL DAN  
BERSIAP GOLDEN CROSS**

# TECHNICAL RECOMENDATION



**TLKM – PT TELEKOMUNIKASI INDONESIA (PERSERO)  
TBK**

**CLOSING 5/5/2020 RP 3320 (0%)**

**BUY  
TARGET PRICE 3880  
STOPLOSS < 3300**

**GRAVESTONE DOJI  
STOCHASTIC : UPTREND  
MACD : HISTOGRAM POSITIF DAN UPTREND**

# RESEARCH TEAM



**YULIANA**

**RESEARCH ANALYST &  
CORPORATE FINANCE**



**DIMAS WP PRATAMA, CSA**

**TECHNICAL ANALYST**

# EQUITY CAPITAL MARKET TEAM



**JESSIE JAMES**

**HEAD OF EQUITY SALES**



**PRASETYO NUGROHO**

**HEAD OF DEALING ROOM**



**GABRIELLA PRATIWY**

**HEAD OF ONLINE TRADING**